

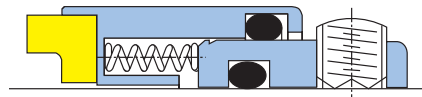
Component Seals

AESSEAL® has a comprehensive range of component seals for all applications. Some of the more popular designs are shown below:



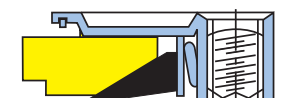
SAI™ - Internal Balanced Mechanical Seal

- Non-shaft fretting design to reduce cost in pump and equipment overhaul
- Provides maximum seal life in clogging and congealing liquids such as slurries given the smooth non-clogging profile (springs out of the product)
- Hydraulically balanced seal face
- Premium drive integrity (milled metallic lug drive)
- Sizes available from 0.750" to 6.000" (18mm - 155mm)



MO series - Internal Monolithic Face Mechanical Seal

- Available with a hydraulically balanced or unbalanced seal face
- Non-clipped, multiple spring design
- Enhanced flush with non-clogging spring design
- PTFE wedge or elastomer shaft seal options
- Available in 12 generic forms, covering shaft sizes 0.750" to 4.000" (20mm - 100mm)



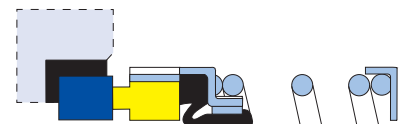
B02™ - Internal Bellows Mounted Mechanical Seal

- Bellows with NO bonded joints, available in Viton, Nitrile or EPR
- Single coil spring design with bi-directional shaft rotation feature
- Available in 3 generic forms, covering shaft sizes (10mm - 100mm)



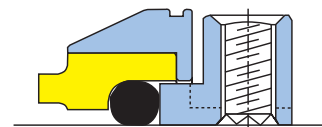
PO series - Internal Single Coil Spring Mechanical Seal

- One of the most commonly utilized component seal designs globally
- Single coil spring design with bi-directional shaft rotation feature
- Positive face drive mechanism
- Available in 9 generic forms, covering shaft sizes 0.375" to 3.000" (10mm - 75mm)



CS™ / CSC™ Range - External Seal with Non-Metallic Parts.

- External seal with hydraulically balanced seal face
- Non-metallic wetted parts for use on chemical applications
- Supplied clipped and pre-set to working length
- Available with collet drive for use with hardened or non-metallic sleeves
- Sizes available from 0.625" to 4.000" (20mm - 100mm)



For more information and dimensions see the individual product brochures.



MULTI-SPRING COMPONENT SEALS



SINGLE SPRING COMPONENT SEALS